



WELCOME TO THE

BASIC BUILDER WORKSHOP

impact yourself, your team
& the community



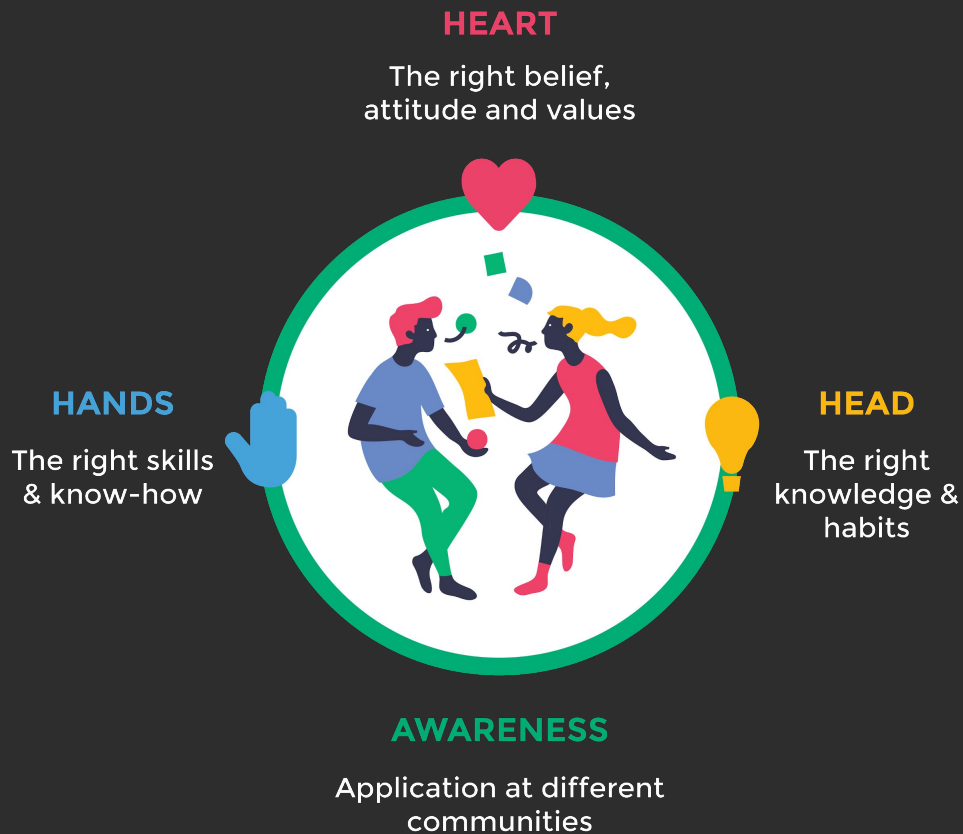
ABOUT US



We are an experiential learning company
growing extraordinary people impacting
communities with **a heart of service.**

OUR METHODOLOGY

SERVICE LEARNING



What Do We Do

We believe that anyone has the potential to be extraordinary, we imagine a world where:

- What people learn can be applied to every area of their life.
- Learning does not stop after you leave school.
- That the most important lessons to learn are not found in textbooks but are developed through the relationships we build.
- That what you learn must lead to a purpose beyond yourself, but should be applied for others.



Why Basic Builder

The Basic Builder Workshop is a 1 day course that teaches the basics of DIY knowledge.

Participants develop their knowledge of basic building skills, like simple safety precautions or how to measure properly.

Practice the skills required to use your building knowledge, like how to nail a nail.

Gain an awareness of what you are capable of building with your DIY abilities.

Upon completion of this workshop, participants earn the rank of a Rookie that enables the impact outlet to serve with EPIC Homes in their mission to provide safe homes for marginalised communities.



How Do We Teach



Practical and Theoretical Combined

Building skills cannot be solely taught through slides and in a classroom. We combine the theoretical knowledge people need to know with application of practical skills in a workshop.



Hands on Facilitators

To ensure everyone is able to learn and apply each skill, facilitators are used to guide and reinforce teachings, every step of the way.



Interactive Style

The syllabus is curated into 'stations' which small groups cycle through. This creates a dynamic environment and more manageable training.



Skill Assessments to Test

Participants are tested to assess skill level and are recorded in a database to standardise skills for future projects.



Project to Apply

Participants are immediately given a project challenge to apply what they have learnt. They are guided on how their skill and knowledge can be made relevant.



What You Learn



Sawing Station



Fastener and
Hand Tools
Station



Hammering
Station



Safety Station



Drilling Station

Learn how to accurately, and safely use the jigsaw, circular saw and the drop saw. The basic tools needed to cut timber of all sizes.

Get to know the fasteners and hand tools that you'll commonly use and what's the difference between them. Such as the difference between a bolt, screw or nail.

The most essential skill in construction, how to hammer a nail in properly. Learn the correct way to hold a hammer for you and how to nail safely and effectively.

Safety is typically overlooked but should be the most important aspect to consider. Learn basic safety precaution and how to correctly assemble a scaffold for work at height.

Learn how to use power tools to screw and drill into timber, concrete or fibre cement board. Learn about different types of power tools, drill bits and practice using them.



What's Next

IMPACT OUTLETS

PART 1

LEARN



Learn how to equip yourself with hand and power tool skills, construction methods and safety protocols.

PART 2

APPLY



Put your newly learnt skills to use! Apply your skills, design and build a useable project

EARN
THE
BUILDER
BADGE!



PART 3

IMPACT



Volunteer Build

Join a building project that impacts the local community in your city with other volunteers.



An EPIC Home Build

3 days

30 - 35 pax

Join a challenging, engaging and rewarding home build with friends and the local community!



Maker Night

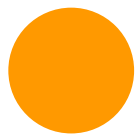
Join a night where we build and design furniture for a Community in need.

Level Up!

What's Next

Builder Training Program

The Builder Training Program (BTP) is an initiative by EPIC which aims to provide trained builders that support and fuel the growth of EPIC Homes projects.



Recruit

Everyone starts off as a recruit, the first step is the initiative to join the Builder Training Programme and be part of the EPIC Army.



Rookie

Basic Builder Workshop (BB)

After going through the Basic Builder Workshop the Recruit levels up into a Rookie.

They are now allowed to join an EPIC Home Build



Apprentice

Advanced Builder Course (ABC)

1 Home Build

Once you have completed your 1st EPIC Home you can join the Advanced Builder Course to become an Apprentice, allowing you to join more builds and assist a Specialist on them.



Specialist

3 - 5 Home Builds

If you have completed your Apprenticeship. You join a build to become a Specialist. They have high technical knowledge of building and being able to lead a team to build the EPIC Home.



Master Builder

Master Builder Course (MBC)

5 + Home Builds

Master Builders are in charge of project managing during an EPIC Homes Build. They oversee their Specialist, their teams and the whole build to make sure everything is in order.

Testimonies



Giles Gibbins, Architecture Graduate

"I was surprised how quickly I was able to learn how to build an EPIC home and with barely any previous builder knowledge. The Builder Training Programme really made me feel ready to build a whole EPIC home, I left feeling extremely excited about the challenge."



Sky Chew, Web Developer

"My experience with the BTP was an empowering one. It provided a self realisation experience. Besides providing the technical experience and improvement it also provided an enriching leadership and team building experience. "



Triffany Leo, Content Manager

The BTP was really great. I learnt a lot about every aspect of the house build that you wouldn't always know about when you are a volunteer builder.

It was really fun and is a great investment of time for such a rewarding skill set that could potentially help many families.

PRICING PACKAGE

Per individual

RM135

Per private
workshop

RM4,800

FOR MORE ENQUIRIES

dna@epic.my | +6 03 5613 5683





epic dna sdn. bhd.
all rights reserved © 2018

dna@epic.my | +6 03 5613 5683

dna.epic.my